

QANTO

the next generation of
feeding computers



QANTO

- **What's new?**
 - Housing with enhanced protection against dust and humidity (intended for office conditions with minor dust pollution)



- **What's new?**
 - Wear-free* UPS (due to usage of supercaps instead of a battery)



- * No battery replacement necessary
- * No troubles at power breakdown, due to empty/damaged battery

- **What's new?**
 - 2 pcs Solid State Drives (SSD)
(replacing the USB-sticks)

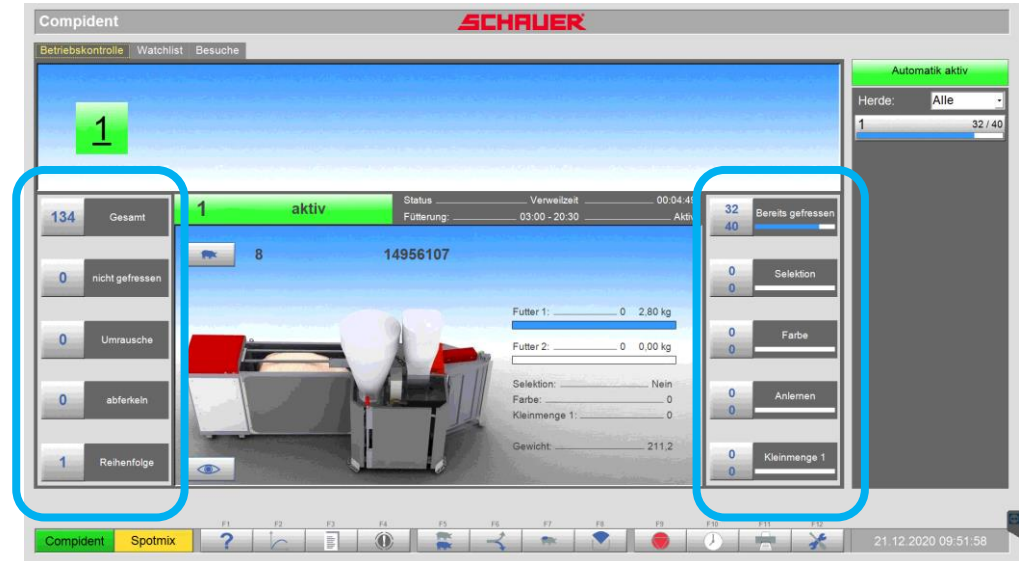


* No more troubles with damaged USB sticks

- **What's new?**
 - 24" Widescreen Monitor
Full-HD resolution
(1920x1080)
 - New Software „VFPig6“
(new features described on next pages)



- **Full-HD resolution (50% more screen surface)**
 - Quick info fields, available directly in function control



- Full-HD resolution (50% more screen surface)
- More space, to view the complete text (e.g. feed curve name)

all -- Boxen 445 / 445

Feed quantity Feeding Frequency control Assembly Protokoll

Feed quantity

* Box	Mode	MA	No.	FD	Weight	FC-name	Days	Calc. on	Cal.	Gr.	Calc. Am	Prop.	Cont	Target	Max%	Cal.	Rg
1 Bree	6	514	10	514	280.6	Farrowing	265	Weight	Only days	7	104.84	120	0	100	100	Calc1	1
2 Bree	9	514	284.4	Farrowing	272	Weight	Only days	7	133.67	170	0	100	100	Calc1	1	1	1
3 Bree	6	514	288.3	Farrowing	279	Weight	Only days	7	68.15	130	0	100	100	Calc1	1	1	1
4 Bree	6	514	288.3	Farrowing	279	Weight	Only days	7	68.15	130	0	100	100	Calc1	1	1	1
5 Bree	6	514	288.3	Farrowing	279	Weight	Only days	7	78.63	150	0	100	100	Calc1	1	1	1
6 Bree	6	514	288.3	Farrowing	279	Weight	Only days	7	0.00	0	0	100	100	Calc1	1	1	1
7 Bree	6	514	26.3	Farrowing	279	Weight	Only days	7	0.00	0	0	100	100	Calc1	1	1	1
8 Bree	6	514	26.4	Farrowing	279	Weight	Only days	7	0.00	0	0	100	100	Calc1	1	1	1
9 Bree	6	514	26.3	Farrowing	279	Weight	Only days	7	0.00	0	0	100	100	Calc1	1	1	1
10 Bree	6	514	26.3	Farrowing	279	Weight	Only days	7	0.00	0	0	100	100	Calc1	1	1	1
11 Bree	6	514	26.3	Farrowing	279	Weight	Only days	7	0.00	0	0	100	100	Calc1	1	1	1
12 Bree	6	514	26.3	Farrowing	278	Weight	Only days	7	0.00	0	0	100	100	Calc1	1	1	1
13 Bree	6	514	288.3	Farrowing	279	Weight	Only days	7	0.00	0	0	100	100	Calc1	1	1	1
14 Bree	6	514	288.3	Farrowing	278	Weight	Only days	7	0.00	0	0	100	100	Calc1	1	1	1
15 Bree	6	514	288.3	Farrowing	279	Weight	Only days	7	0.00	0	0	100	100	Calc1	1	1	1
16 Bree	6	514	288.3	Farrowing	279	Weight	Only days	7	0.00	0	0	100	100	Calc1	1	1	1
17 Bree	10	514	281.1	Farrowing	266	Weight	Only days	7	131.05	150	0	100	100	Calc1	1	1	1
18 Bree	14	514	279.4	Farrowing	263	Weight	Only days	7	183.48	150	0	100	100	Calc1	1	1	1
19 Bree	9	514	282.8	Farrowing	269	Weight	Only days	7	110.08	140	0	100	100	Calc1	1	1	1
20 Bree	11	514	282.2	Farrowing	268	Weight	Only days	7	144.16	150	0	100	100	Calc1	1	1	1
21 Bree	9	514	283.3	Farrowing	270	Weight	Only days	7	102.22	130	0	100	100	Calc1	1	1	1

Liquimix SCHAUER 30/12/2020 13:27:38

alle -- Boxen SCHAUER 445 / 445

Futtermittel Fütterung Frequenzregelung Montage Protokoll

Futtermittel

* Box/Art	MA	Stück	MT	Gewicht	FC-Name	Tage	Ber nach	Ber	Gr.	Ber Misp	Ant %	Korn%	Zer%	Max%	Ber	Rg
1 Zucht	6	514	280.9	Farrowing Sows	264.0	Gewicht	Nur Tage	7	104.84	120	0	100	100	Bere1	1	1
2 Zucht	9	514	283.9	Farrowing Sows	271.0	Gewicht	Nur Tage	7	133.67	170	0	100	100	Bere1	1	1
3 Zucht	6	514	287.8	Farrowing Sows	278.0	Gewicht	Nur Tage	7	68.15	130	0	100	100	Bere1	1	1
4 Zucht	6	514	287.8	Farrowing Sows	278.0	Gewicht	Nur Tage	7	68.15	130	0	100	100	Bere1	1	1
5 Zucht	6	514	287.8	Farrowing Sows	278.0	Gewicht	Nur Tage	7	78.63	150	0	100	100	Bere1	1	1
6 Zucht	6	514	287.8	Farrowing Sows	278.0	Gewicht	Nur Tage	7	78.63	150	0	100	100	Bere1	1	1
7 Zucht	6	514	287.8	Farrowing Sows	278.0	Gewicht	Nur Tage	7	62.91	120	0	100	100	Bere1	1	1
8 Zucht	6	514	287.8	Farrowing Sows	278.0	Gewicht	Nur Tage	7	0.00	0	0	100	100	Bere1	1	1
9 Zucht	6	514	287.8	Farrowing Sows	278.0	Gewicht	Nur Tage	7	0.00	0	0	100	100	Bere1	1	1
10 Zucht	6	514	287.8	Farrowing Sows	278.0	Gewicht	Nur Tage	7	0.00	0	0	100	100	Bere1	1	1
11 Zucht	6	514	287.8	Farrowing Sows	278.0	Gewicht	Nur Tage	7	0.00	0	0	100	100	Bere1	1	1
12 Zucht	6	514	287.8	Farrowing Sows	277.0	Gewicht	Nur Tage	7	0.00	0	0	100	100	Bere1	1	1
13 Zucht	6	514	287.8	Farrowing Sows	278.0	Gewicht	Nur Tage	7	0.00	0	0	100	100	Bere1	1	1
14 Zucht	6	514	287.7	Farrowing Sows	277.0	Gewicht	Nur Tage	7	0.00	0	0	100	100	Bere1	1	1
15 Zucht	6	514	287.8	Farrowing Sows	278.0	Gewicht	Nur Tage	7	0.00	0	0	100	100	Bere1	1	1
16 Zucht	6	514	287.8	Farrowing Sows	278.0	Gewicht	Nur Tage	7	0.00	0	0	100	100	Bere1	1	1
17 Zucht	10	514	280.6	Farrowing Sows	265.0	Gewicht	Nur Tage	7	104.84	120	0	100	100	Bere1	1	1
18 Zucht	14	514	278.9	Farrowing Sows	265.0	Gewicht	Nur Tage	7	146.78	120	0	100	100	Bere1	1	1
19 Zucht	9	514	282.2	Farrowing Sows	268.0	Gewicht	Nur Tage	7	110.08	140	0	100	100	Bere1	1	1
20 Zucht	11	514	281.7	Farrowing Sows	267.0	Gewicht	Nur Tage	7	144.16	150	0	100	100	Bere1	1	1
21 Zucht	9	514	282.8	Farrowing Sows	269.0	Gewicht	Nur Tage	7	102.22	130	0	100	100	Bere1	1	1
22 Zucht	2	514	283.9	Farrowing Sows	271.0	Gewicht	Nur Tage	7	17.47	100	0	100	100	Bere1	1	1
23 Zucht	8	514	287.8	Farrowing Sows	278.0	Gewicht	Nur Tage	7	69.90	100	0	100	100	Bere1	1	1
24 Zucht	8	514	286.3	Farrowing Sows	243.0	Gewicht	Nur Tage	7	97.85	140	0	100	100	Bere1	1	1
25 Zucht	1	514	216.0	Farrowing Sows	138.0	Gewicht	Nur Tage	7	0.00	0	0	100	100	Bere1	1	1
26 Zucht	6	514	287.2	Farrowing Sows	277.0	Gewicht	Nur Tage	7	52.42	100	0	100	100	Bere1	1	1
27 Zucht	1	514	287.8	Farrowing Sows	278.0	Gewicht	Nur Tage	7	0.00	0	0	100	100	Bere1	1	1
28 Zucht	9	514	285.0	Farrowing Sows	273.0	Gewicht	Nur Tage	7	94.36	120	0	100	100	Bere1	1	1
29 Zucht	11	514	287.8	Farrowing Sows	278.0	Gewicht	Nur Tage	7	115.33	120	0	100	100	Bere1	1	1

Name der Futterkurve, die für diese Box verwendet wird.

Liquimix 30.12.2020 13:25:28

- Full-HD resolution (50% more screen surface)
- Horizontal scrolling not necessary any more

Consumption components											
Boxes Components											
Box	Acid 1	Barley	Maize	Sow Mineral	Soya	Soya 2	Soya Hull 2	Soya Hulls	Soya Oil	Water	
	Amount	Amount	Amount	Amount	Amount	Amount	Amount	Amount	Amount		
1	0.70	206.88		26.85	8.13	118.85	33.89	0.61	18.77		
2	0.77	230.34		29.81	8.64	132.64	37.83	0.56	20.81		
3	0.53	156.01		20.27	7.02	88.74	25.44	0.60	14.17		
4	0.53	156.26		20.30	6.95	88.96	25.50	0.58	14.19		
5	0.49	146.21		19.00	6.73	83.02	23.70	0.68	13.27		
6	0.37	111.17		14.45	6.67	61.61	17.85	0.69	10.08		
7	0.39	115.00		14.94	7.39	63.22	18.51	0.68	10.43		
8	0.38	113.43		14.74	6.67	62.93	18.26	0.67	10.28		
9	0.38	112.52		14.63	6.53	62.52	18.11	0.67	10.20		
10	0.42	126.17		16.37	6.59	70.87	20.33	0.69	11.46		
11	0.42	125.58		16.31	4.78	72.29	20.26	0.67	11.41		
12	0.42	125.42		16.29	4.79	72.19	20.21	0.69	11.39		
13	0.41	121.98		15.84	3.59	71.27	19.63	0.69	11.08		
14	0.35	103.21		13.39	3.58	59.73	16.52	0.69	9.37		
15	0.27	79.55		10.30	2.33	46.48	12.60	0.69	7.23		
16	0.25	73.27		9.48	2.27	42.66	11.59	0.65	6.87		
17	0.89	267.12		34.65	9.66	154.22	43.53	1.06	24.22		
18	0.92	272.96		35.42	9.75	157.78	44.55	1.06	24.81		
19	0.92	270.15		35.10	11.99	153.83	44.06	1.03	24.54		
20	1.18	353.73		45.96	15.73	201.39	57.71	1.33	32.13		
21	0.83	260.83		32.59	11.16	142.79	40.85	1.02	22.79		
22	0.11	33.67		4.38	1.30	19.37	5.53	0.06	3.05		
23	0.43	125.86		16.33	6.53	73	20.43	0.58	11.44		
	65.44	20,695.48	1,077.04	2,561.20	859.70	10,519.33	3,232.47	75.27	1,662.13	18	

Number of the box.

Equinox SCHAUER 30/12/2020 13:29:31

Verbrauch Komponenten											
SCHAUER											
Box	Acid 1	Barley	Maize	Sow Mineral	Soya	Soya 2	Soya Hull 2	Soya Hulls	Soya Oil	Water	
	Menge	Menge	Menge	Menge	Menge	Menge	Menge	Menge	Menge	Menge	
2	0.75	223.90		26.97	8.30	129.00	36.77	0.56	20.21	2,060.20	299.36
3	0.51	151.21		19.65	6.73	86.06	24.64	0.60	13.73	1,362.31	202.35
4	0.51	151.33		19.66	6.67	86.21	24.68	0.58	13.73	1,363.40	202.52
5	0.47	140.51		18.26	6.39	79.84	22.76	0.68	12.74	1,293.53	188.01
6	0.36	107.45		13.97	6.47	59.51	17.24	0.69	0.74	989.20	143.77
7	0.38	111.90		14.54	7.23	61.46	18.00	0.68	10.14	1,030.17	149.72
8	0.38	113.43		14.74	6.67	62.93	18.26	0.67	10.28	1,044.44	151.79
9	0.38	112.52		14.63	6.53	62.52	18.11	0.67	10.20	1,036.07	150.57
10	0.42	126.17		16.37	6.59	70.87	20.33	0.69	11.46	1,161.74	168.85
11	0.42	125.58		16.31	4.78	72.29	20.26	0.67	11.41	1,156.08	168.01
12	0.42	125.42		16.29	4.79	72.19	20.21	0.69	11.39	1,154.62	167.80
13	0.41	121.98		15.84	3.59	71.27	19.63	0.69	11.08	1,123.01	163.20
14	0.35	103.21		13.39	3.58	59.73	16.52	0.69	9.37	950.02	138.05
15	0.27	79.55		10.30	2.33	46.48	12.60	0.69	7.23	735.17	106.41
16	0.25	73.27		9.48	2.27	42.66	11.59	0.65	6.87	674.36	98.01
17	0.88	258.98		33.59	9.17	149.69	42.19	1.06	23.47	2,384.11	346.47
18	0.88	261.50		33.93	9.07	151.39	42.85	1.06	23.75	2,407.65	349.92
19	0.90	262.30		34.07	11.93	149.39	42.74	1.03	23.90	2,414.29	350.98
20	1.15	343.39		44.61	15.13	195.60	55.99	1.33	31.17	3,161.57	450.48
21	0.81	243.39		31.62	10.73	138.64	39.62	1.02	22.10	2,241.07	325.71
22	0.10	32.46		4.22	1.23	18.69	5.33	0.09	2.94	299.80	43.43
23	0.41	120.80		15.68	6.23	67.91	19.66	0.58	10.97	1,112.30	161.65
24	0.40	119.04		15.47	6.65	63.43	18.88	1.02	10.82	1,096.49	159.40
26	0.55	164.51		21.39	9.12	91.87	26.00	0.87	14.95	1,515.10	220.23
28	0.75	224.79		29.20	9.81	120.06	36.66	0.87	20.41	2,069.84	300.82
29	0.90	274.78		35.70	12.66	156.53	44.93	1.06	24.94	2,530.05	367.70
41	0.34	152.05	53.42	13.47	2.02	27.08	17.14	0.96	3.01	1,073.90	89.83
43	0.32	143.34	50.36	12.69	1.89	25.54	16.16	0.91	2.83	1,012.46	84.70
44	0.29	132.36	46.50	11.72	1.62	23.71	15.30	0.47	2.64	933.10	76.20
45	0.29	132.49	46.55	11.73	1.64	23.70	15.31	0.47	2.64	933.90	76.29
	63.53	20,107.39	1,057.94	2,487.96	825.94	10,241.30	3,137.07	75.27	1,611.40	178,686.00	24,657.64

Ausgeteilte Menge der Komponente an dieser Box [kg]

Equinox SCHAUER 30.12.2020 13:28:37